



NEWS 'N NOTES

CHINESE HISTORICAL SOCIETY OF SOUTHERN CALIFORNIA

WWW.CHSSC.ORG • (323) 222-0856

APRIL 2001

YOU OUGHTA BE IN MOVIES...

At our regular program meeting on April 4th, we were treated to a special presentation by a special talent, veteran movie/television actor and director/producer James Hong. An overflow audience of over 120 persons crowded into the Castelar School multipurpose room on a cool Wednesday evening to hear James, or "Jimmy" to his friends, give an insightful retrospective, illustrated with video and still photos, on his life and career.

Born in Minneapolis, Minnesota in 1929, James as a young boy was thrust by his father into making patriotic speeches in support of China, in its era of conflict with Japan, before the local Chinese community in Minneapolis. After the family moved back from a sojourn of a few years in China, James completed high school and attended the University of Minnesota for several years before transferring to the University of Southern California to complete his studies in civil engineering. By then, Don Parker, a high school chum, and James were entertaining audiences as the standup comedy act of Hong and Parker, and Don came out to the west coast as well.

story continued on page 5

STEVE AND MILLY LIU HONORED

Dr. Steve C.K. Liu and his wife, Dr. Milly Liang Liu, were singularly honored on March 24th by the Harbor-UCLA Collegium during an elegant evening at the Long Beach Aquarium of the Pacific, to benefit "Race For Research 2001". Dinner, a Silent Auction, and live entertainment featuring the entire score of "Phantom Of The Opera" along with the backdrop of the large aquarium tanks were also part of the festivities.

The Collegium, which was incorporated in 1997 by community leaders to support and recognize the programs at Harbor-UCLA Research and Education Institute, honored Steve and Milly Liu for their dedication and commitment to the Institute's education programs. To further recognize their lifetime support, a new state-of-the-art research building at UCLA-Harbor Research and Education Institute will be named for them.

As many of you know, Dr. Steve Liu is featured in the Society's "Chinese American Portraits of Pride" project (CAPP), which is currently being exhibited in several venues throughout the area. The CAPP project recognizes prominent Chinese American scientists and researchers who have contributed to our defense and health industries, and hopefully will help balance biased journalism in recent years. Dr. Liu was also featured in the recent On Gold Mountain exhibit at the Autry Museum of Western Heritage; this same exhibit will open at the Smithsonian Institute in Washington, D.C. on May 17, 2001.

story continued on page 5

MAY PROGRAM

WEDNESDAY, MAY 2ND, 2001

7:00 PM

(EARLY START TIME FOR THIS SPECIAL PROGRAM SO PLEASE COME ON TIME)

CASTELAR ELEMENTARY SCHOOL

MULTIPURPOSE ROOM

840 YALE ST.

LOS ANGELES, CHINATOWN

(PARK ON PLAYGROUND. ENTER ON COLLEGE ST. BETWEEN HILL AND YALE STREETS)

HISTORY OF THE CHINESE FISHING INDUSTRY

Society member Linda Bentz is a historical researcher who received her degree in anthropology from UCLA. She has worked with the National Park Service investigating Chinese presence on Santa Rosa Island and is currently under contract with the Channel Islands National Marine Sanctuary researching historic cultural resources within the sanctuary for the period of 1860 to 1900. She has done extensive work in three historic Chinese communities: Ventura, Santa Barbara and Cambria. Her research interests include, Chinese fishermen, Chinese American women and families, and California built Chinese junks. Linda has collected an unsurpassed knowledge of Chinese who made their living from the waters off the Southern California coast.

Joining Linda will be John Muir who is Associate Curator of Small Craft at San Francisco Maritime National Historic Park. His duties there include the restoration and repair of historic boats in Park's collection, as well writing and researching the history of watercraft use in the San Francisco Bay Area. Mr. Muir has also led numerous reconstruction of extinct watercraft types, including a Native American tule reed boat and a scale replica of a Monterey squid fishing sampan. In the summer of 2002, at China Camp State Park in San Rafael, Mr Muir plans to lead a team of volunteer boatbuilders in the construction of a replica of a 45-foot San Francisco shrimp fishing junk. The design for the replica was derived from historic photographs and archaeological information gathered by Mr. Muir during his masters thesis excavation of the remains of two junks lying in the mud at China Camp. Mr. Muir will be speaking about his work at China Camp, and his plans for the junk replica project next year.

We encourage you to bring in your questions and stories that you may have heard related to this incredible chapter of the Chinese American experience.

CONTENTS • APRIL 2001

• CHINESE FISHING INDUSTRY • HONORING STEVE AND MILLY LIU • SUMMER INTERNSHIPS • AND MORE •



CHINESE HISTORICAL SOCIETY OF SOUTHERN CALIFORNIA

APRIL 2001

SPECIAL THANKS FOR APRIL REFRESHMENTS TO:

NATALINA CHEW
JOANN DURAY
WINNIE LEE
DOROTHY LEW
MARGIE LEW
WINNIE LEW
RUTH LUNG
TIM & ANNIE SIU
NOEL TOY WONG
JOHNNY YEE

We apologize if we have inadvertently left anyone off this list.
Your support is invaluable and much appreciated.

INTRODUCTION

We are giving a warm welcome to Kelli Allen, our new administrative assistant, working with us at the CHSSC office. After spending a year and a half as a missionary and learning Cantonese in Hong Kong, she went back to the U.S. to study Mandarin for a year. She worked as an intern/tour guide on the Yangtze River awhile getting her degree from BYU in December 2000. Born and raised in Torrance, she now lives in Santa Monica.

SUMMER INTERNSHIPS

Funded by the Getty Grant Program in association with The El Pueblo Park Association and El Pueblo de Los Angeles Historical Monument City of Los Angeles. Duration June 1-August 24, 2001, 40 hours per week with \$3000 stipend for 10 week period. Deadline for application April 30, 2001. For more info please call William Estrada at (213) 680 2525.

Funded by the Getty Grant Program in association with Chinese American Museum. Duration June 1-August 24th, 2001, 40 hours per week with \$3000 stipend for 10 weeks period. Deadline for application April 30th, 2001. For more info please visit www.camla.org.

JOB OPENINGS

Posted April 4, 2001 Administrative Assistant and Assistant Curator positions at Chinese American Museum. Both positions are contract full time position. More info call (213) 626-5240 or visit www.camla.org.

CH'ING MING

Saturday, April 7th, was a stormy day but 40 hardy CHSSC members and the Los Angeles Conservancy visited our restored 19th century memorial shrine to honor Los Angeles' Chinese American pioneers and to have Ch'ing Ming. Longtime Society members Dr. Gene Cooper and Dr. Paul Chace began the formal portion, presenting a wealth of information on Ch'ing Ming. Plaques were then presented in appreciation of major donors to the shrine preservation project. The stormy skies cleared up just as the formal part of the event ended, revealing gorgeous patches of blue sky above, and all the earth's colors crystal clear. In this crisp setting, participants enjoyed dim sum, beverages, and a whole roast pig, provided through the generous efforts of Board members Cy Wong and Ella Quan.

Many thanks to everyone who helped with the event, and a special thanks to our wonderful CHSSC office staff (Kelli and Peter) for their assistance.

2000-2001

PRESIDENT

IRVIN R. LAI

VICE-PRESIDENT

EUGENE W. MOY

V.P. PROGRAM

GILBERT HOM

SECRETARY

HENRIETTA YUAN

TREASURER

ELLA Y. QUAN

FINANCIAL SECRETARY

FRANKLIN MAH

MEMBERSHIP SECRETARY

CY WONG

BOARD OF DIRECTORS

CHAIRMAN OF THE BOARD

SUSAN G. DICKSON

PETE CHINN

MUNSON KWOK

RUTH LUNG

WING MAR

BEN NAKAYAMA

JEFFREY TUNG

APPRECIATION OF OUR
CHINESE AMERICAN HERITAGE

CHSSC
P.O. Box 862647
LOS ANGELES, CA 90086-2647

PHONE / FAX
(323) 222-0856

WWW.CHSSC.ORG

A NON-PROFIT ORGANIZATION



SOME FINAL THOUGHTS

On Saturday April 7, the Chinese Historical Society held a Ch'ing Ming Ceremony at the site of the 19th Century Shrine in the Evergreen Cemetery. This event was held to help bring more awareness of this important historical monument, recognize major donors and celebrate the shrine's preservation. We only need to look back a few years and remember how close we came to losing this shrine, the oldest remaining Chinese-built structure in Los Angeles, how close we came to losing the last physical evidence of those Chinese pioneers who were once buried in the paupers' section of the Evergreen Cemetery. After enduring so many challenges in life, their passing did not end their hardships. At the time they were buried, no other cemetery in Los Angeles would accept their bodies.

Traditionally Ch'ing Ming has been a day for families to come together and hold a special remembrance of relatives who have passed away. Some performed various rituals like "sweeping of the graves", burning incense, or offering foods. Today, the offering of flowers has almost completely replaced the leaving of food, and families are more likely to visit loved ones on Easter rather than Ch'ing Ming.

In a recent conversation, Munson Kwok raised some interesting points that I thought were worth discussing. He felt that there is a need to learn more about the traditions connected to Ch'ing Ming, which is historically a much more sacred and personal holiday than the lively New Years or the Moon Festival. He recommends that we solicit opinions throughout the community about how they see and pay homage to this solemn day. It is not necessary to hold traditional beliefs to understand the special importance that Ch'ing Ming had for the early Chinese community.

One of the points Paul Chace made in his talk at our Ch'ing Ming ceremony was that since so many of the early Chinese pioneers who died in America, like those once buried in Evergreen, were without family, the community took on the responsibilities of the family. I am very thankful for the Society and their friends for taking responsibility for remembering our early ancestors.

MAY 5, 12, 19

LOS ANGELES COUNTY MUSEUM OF ART CLASSES
FOR ADULTS
WWW.LACMA.ORG

MAY 6

ELYSIAN PARK COMMITTEE FUNDRAISER DINNER
AT GRACE E. SIMONS LODGE
FOR MORE INFO, CALL MICHAEL KOGAN AT
(213) 250-2378

MAY 11

CHINESE HISTORICAL SOCIETY OF SOUTHERN
CALIFORNIA - ANNUAL SPRING DINNER
BURNING THE MORTGAGE!!!
FOR RESERVATION & INFO, CALL KELLI AT
(323) 222-0856

MAY 12

CHILDREN'S DAY CELEBRATION: CHIBI K-RUN
FOR KIDS 4-12 AT LITTLE TOKYO
REGISTRATION \$25-\$10
(213) 628-2725

MAY 12

BOOK SIGNING BY ICY SMITH, AUTHOR OF THE
LONELY QUEUE AT
WALDENBOOKS, MONTEBELLO TOWN CENTER
4 PM

MAY 13

THE LIM FAMILY IN CONCERT WITH HAWAIIAN
MUSIC AT JAPAN AMERICA THEATER
4 PM, \$25-\$21
(213) 680-3700

MAY 13

MOTHER'S DAY HAWAIIAN STYLE & ASIAN PACIFIC
ARTS AND CRAFTS FAIR,
FREE, 11 AM - 4 PM AT JACCC PLAZA
(213) 628-2725

MAY 14

EAST WEST PLAYER VISIONARY AWARDS DINNER
AT WESTIN BONAVENTURE
(213) 625-7000

NEWS 'N NOTES LAYOUT DESIGN BY WWW.SPOONFULDESIGN.COM

SUBMISSIONS OF CALENDAR EVENTS AND ARTICLES MUST BE RECEIVED BY THE 15TH OF EACH MONTH IN ORDER TO
BE CONSIDERED IN THAT MONTH'S NEWSLETTER. PLEASE CONTACT: YVONNE CHIA AT YCHIA76@HOTMAIL.COM



CHINESE HISTORICAL SOCIETY OF SOUTHERN CALIFORNIA

EXHIBITS AND PERFORMANCES • APRIL 2001

MAY 15

SPECIAL ELECTION TO FILL VACANCY LEFT BY
ASSEMBLYWOMAN GLORIA ROMERO OF THE 49TH
DISTRICT FROM EAST LOS ANGELES TO SAN
GABRIEL, (CANDIDATES INCLUDE MONTEREY PARK
COUNCIL WOMAN JUDY CHU)

MAY 18

CHINATOWN PUBLIC SAFETY ASSOCIATION 19TH
ANNUAL AWARDS BANQUET
FOR MORE INFO, CALL (213) 621-3043
OR E-MAIL CPSA90012@YAHOO.COM

WASHINGTON D.C

MAY 7-9

THE ANNUAL CONVENTION OF THE NATIONAL
COALITION FOR ASIAN PACIFIC AMERICAN
COMMUNITY DEVELOPMENT
WWW.NATIONALCAPACD.ORG

SAN DIEGO

MAY 17 - 20

26TH ANNUAL CALIFORNIA PRESERVATION
CONFERENCE
CO-HOSTED BY CALIFORNIA PRESERVATION
FOUNDATION (CPF) AND SAVE OUR HERITAGE
ORGANIZATION (SOHO)
FOR MORE INFO (510) 763-0972

NEW YORK

MAY 30

MUSEUM OF CHINESE IN AMERICA'S (MOCA)
LEGACY DINNER AT WINDOW ON THE WORLD
FOR MORE INFO, CALL JILL AT
(212) 619-4785

THRU MAY 12

CARLEE FERNANDEZ / FRIENDS
AT AH (ACUNA-HANSEN) GALLERY
427 BERNARD STREET, LOS ANGELES
(323) 441-1624
E CONART@AOL.COM

THRU MAY 13

RICE BOY "A LOVE STORY ... A LOVELY FAIRYTALE-
LIKE STORY."
MARK TAPER FORUM, CENTER THEATRE GROUP
135 NORTH GRAND AVE
FOR MORE INFO CALL (213) 628-0972

MAY 17-20

LANE NISHIKAWA PERFORMS IN HIS PLAY *GILA
RIVER* ABOUT THE ARIZONA RELOCATION CENTER
AT JAPAN AMERICAN THEATER, \$25 - \$10
8 PM ON THURS- SAT,
2 PM ON SUN
(213) 680-3700

MAY 17-24

VISUAL COMMUNICATIONS FILMFEST
AT DIRECTORS GUILD OF AMERICA & JAPANESE
AMERICAN CULTURAL & COMMUNITY CENTER
(213) 680-4462

MAY 19

ON THE ROCKS, ART, MUSIC & FOOD WITH
SCULPTOR ELAINE KIMURA
(818) 315-4954

MAY 19- JUNE 9

GOOD THING
MARK TAPER FORUM, CENTER THEATRE GROUP
135 NORTH GRAND AVE
FOR MORE INFO CALL (213) 628-0972

MAY 20

THE CHINATOWN FILES DIRECTED BY AMY CHEN.
DIRECTORS GUILD OF AMERICA
7920 SUNSET BLVD
FOR MORE INFO CALL (213) 680-4462 X 68
WWW.VCONLINE.ORG

MAY 23 - JUNE 17

EAST WEST PLAYERS PRESENTS
YANKEE DAWG YOU DIE
120 JUDGE JOHN AISO ST.
(213) 625-7000

MAY 25 - JUNE 2

PEARL HARBOR
AT THE EL CAPITAN THEATRE
6838 HOLLYWOOD BLVD
FOR MORE INFO CALL (800) 347-6396

THRU MAY 27

SUPERFLAT, 19 OF JAPAN'S MOST PROVOCATIVE
ARTISTS WHOSE WORK BRIDGES POP CULTURE AND
FINE ART IN AN EXHIBITION SEEN FOR THE FIRST
TIME OUTSIDE JAPAN
(213) 626 6222 OR WWW.MOCA.ORG



PACIFIC ASIA MUSEUM

46 N. LOS ROBLES AVE., PASADENA

FOR INFO PLEASE CALL (626)449-2742, EXT.20

MAY 6, 2:00 P.M.

RUSSELL LEONG READS FROM AND SIGNS,
"PHOENIX EYES AND OTHER STORIES"

JUNE 23, 2:00 P.M.

NOEL ALUMIT AND OTHER WRITERS READ FROM AND
SIGN, "TILTING THE CONTINENT: SOUTHEAST ASIAN
AMERICAN WRITING"

JULY 28, 2:00 P.M.

KAREN TEI YAMASHITA DISCUSSES AND SIGNS,
"CIRCLE K CYCLES"

MOVIES

story continued from cover

As a performer, James had learned to "play the room", to feel the pulse of the audience, and when opportunities came to act in movies, he felt "drama was easier" than standup comedy. By the mid-1950's, he was receiving sufficient acting work to quit his job in the L.A. County Road Department. His versatility, and ability to play multiple roles and project different voices, sometimes in the same film, has led to over 478 film and television credits, perhaps more than any other actor, from the time he received his Screen Actors Guild card in 1953. Some of his memorable roles occurred in landmark movies such as Love is a Many-Splendored Thing (1955), Flower Drum Song (1961), Chinatown (1974), Airplane (1980), Blade Runner (1982), Big Trouble in Little China (1986), and Mulan (1998, as the voice of Chi-Fu).

In television, James was the No. 1 Son in The New Adventures of Charlie Chan (1958), a job which he lost after he objected to the use of a made-up Caucasian for the lead role. However, James subsequently appeared in many TV roles, and regularly worked in series such as Perry Mason, Hawaii Five-O, Kung Fu (14 episodes), Dynasty, and Martial Law.

James Hong was also a leader and activist in his profession. Early on, he recognized that Asian American actors needed more and better opportunities, and with fellow actor Mako founded the East/West Players 35 years ago. Their first production, Rashomon, was presented in a church basement space arranged through another actor, Beulah Quo. James was also a charter member and first president of the Association of Asian Pacific American Artists (AAPAA), which has long fought for better and more realistic roles for Asian Pacifics. AAPAA has

also successfully prevented the Charlie Chan series from ever reappearing.

The evening's presentation was enhanced by comments from the audience, which included former comedy partner Don Parker and acting colleagues Pat Li and Beulah Quo. But James' brother Walter came forward and closed on a fitting note, with a recitation from the family poem, which prophesied that James would one day fly through the sky, among the stars. As we learned, James Hong has indeed flown among stars--movie stars. Perhaps in the future, in recognition of his talent, professionalism, and leadership, he will one day have a star--on the Hollywood Walk of Fame.

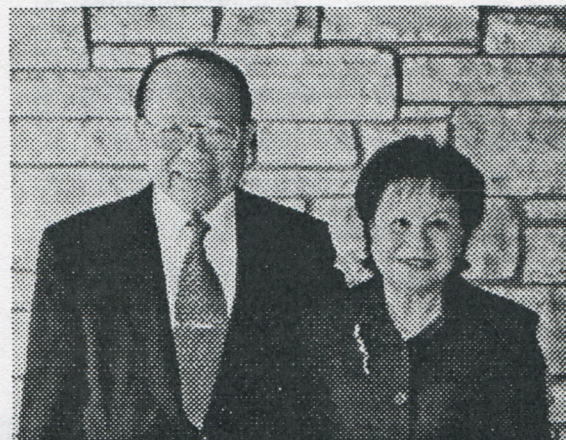
HONORED

story continued from cover

Dr. Steve Liu's first field of interest was in hematology, and he conceptualized a revolutionary process of increasing significantly recovered blood from transfusions. As part of his research in this field, Dr. Liu noted several rare and defective phenomena in blood and plasma components in the patients he was studying. Subsequently, Dr. Liu gave each of those discoveries a scientific name. In his later interest of cardiac patho-physiology he increased the knowledge of cardiology, particularly through research and publishing many articles.

Dr. Liu used his knowledge and insight in the business world also, and became highly successful in stock investments. He and his wife share their good fortune and talents with institutions locally and internationally by donating his teaching time and millions of dollars to the cause of education, because, as Dr. Liu has mentioned in interviews, he was fortunate to have had mentors and teachers who encouraged him in his professional growth.

The CHSSC has benefited from this generosity, and Steve and Milly will be honored, along with other major donors, at our Annual Spring Dinner on May 11th at the Empress Pavilion in Los Angeles Chinatown. The Society will be "burning the mortgage" during this celebration, because of the philanthropy of donors such as Steve and Milly Liu.



Dr. Steve and Milly Liu to be honored for their generosity as major donors to CHSSC.



CHINESE HISTORICAL SOCIETY OF SOUTHERN CALIFORNIA

MEMBERSHIP APPLICATION

NAME _____

ADDRESS _____

CITY _____ STATE _____ ZIP _____

TELEPHONE _____

E-MAIL _____

- ☐ Please include me on the membership roster that will be available to members only

I am interested in helping with:

- ☐ Programs
☐ Publications
☐ Research
☐ Membership/Publicity
☐ Fundraising
☐ Volunteering
☐ Other _____

Membership:

- ☐ New
☐ Renewal
☐ Donate postage
instead of regular mail you will receive updates/News N Notes via e-mail

- ☐ Gum Saan Journal (2 Issues Annually) \$5.00
☐ Active Member, annual \$25.00
☐ Additional Member, annual \$10.00
(spouse, same household)
☐ Contributing, annual \$10.00
(senior citizen over 60 and student)
☐ Institutional, annual \$50.00
☐ Life \$300.00
☐ Corporate, annual \$100.00
☐ Life Patron \$1,000.00

- ☐ Donation: Please accept my tax-deductible donation(s) to the following fund(s)

General \$ _____ Scholarship \$ _____

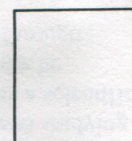
Publications \$ _____

- ☐ 25th Anniversary Commemorative T-Shirt
_____ \$20 for one _____ \$18 for two or more
sizes ☐ Medium ☐ Large ☐ X-Large

*Make checks payable to: CHSSC
We are a tax-exempt non-profit educational organization*



Chinese Historical Society of Southern California
P.O.Box 862647
Los Angeles, CA 90086-2647



FIRST CLASS

